

## Panel Meters

Award-winning solutions  
from the number one  
brand in industry



- > The widest range of models, sizes and capabilities in the industry
- > Display count, rate, time, voltage, current, process, strain gage and temperature
- > Basic models to versatile multi-function and field-upgradeable models
- > Superior technical support
- > Powerful, complimentary Crimson® software
- > Custom products available

## ▶▶▶ Red Lion panel meters. The most solutions. The #1 brand.

### Indication

Low cost, general purpose counters and timers with dedicated functionality and legendary Red Lion quality.



#### CUB3 Series:

General purpose, miniature indicator with 6-digit, 0.2" LCD. Low 3 VDC operating power supplied via internal lithium battery. Reliable integrated circuitry, embedded in a single monolithic, silicon microchip. 1" X 2" snap-in mounting.



#### CUB7 Series:

Dedicated function 8-digit miniature displays with large 0.35" high backlit LCD. Low voltage and high voltage models. Standard wire connections or optional plug-in terminal blocks. Internal lithium battery. Remote reset; NEMA 4X/IP65.

### Control and Indication

Workhorse panel meters offering versatility and functionality with models available for measuring count, rate, time, voltage, current, temperature, process and strain gage.



#### CUB5 Series:

Flexible functionality in a miniature 38 mm x 75 mm package. Field-installable option cards for setpoint and communications. 10 to 28 VDC powered with backlit 0.46" high LCD; NEMA 4X/IP65.



#### PAX Lite:

1/8 DIN meters for dedicated applications. Simple field setup, easy programming and dual setpoint control. 0.56" LED display; NEMA 4X/IP65.

### Why do users prefer Red Lion meters?

Red Lion has more high quality solutions for your digital and analog panel meter requirements than any other supplier, with a wider range of models, sizes and capabilities—from our indicators to the versatile CUB5 and PAX process meters that let you add or change capabilities with plug-and-play, field-installable cards. Red Lion's free Crimson® software offers flexibility, powerful capabilities and intuitive ease. Combine the widest selection with our unmatched quality, speed of delivery and world-class technical support, and you'll understand why, when the world thinks of panel meters, it thinks of Red Lion.

- > Widest range of products in the industry
- > Field-installable option cards
- > Easy-to-use Crimson software
- > Superior quality
- > Best delivery
- > Unmatched technical support
- > Leading Brand\*



\* For 13 consecutive years the readers of Control Design Magazine have voted Red Lion the number one panel meter manufacturer in the industry.

### Advanced Control and Indication

Includes all of the features of the Control and Indication products listed above, plus field-upgradeable option cards for advanced communications and output capabilities.



#### PAX Series:

A versatile 1/8 DIN meter. Add up to 3 field-upgradeable option cards for dual and quad setpoint, retransmitted analog output, RS232, RS485, Modbus, Profibus and DeviceNet™ communications; also dual count, dual rate, and dual process meters available; NEMA 4X/IP65.



#### PAX2:

All the features of the PAX Series with a dual line display and increased update rates. The main display can be programmed for red, orange, or green; while the bottom display is green.



## LD Series:

2.25" and 4" LED displays based on the popular CUB5 series. Single and dual preset models with RS232/RS485 communications; serial slave display version available; universal power supply; NEMA 4X/IP65.



## T48 Series:

1/16 DIN temperature PID loop controller with reduced overshoot. Auto-tuning of PID control settings, dual display of temperature and setpoint; accepts up to 10 types of thermocouple or RTD inputs; multiple setpoints; RS485 communications; NEMA 4X/IP65.



## C48 Series:

1/16 DIN dual line display for counting or timing. Multiple setpoints; RS485 communications; NEMA 4X/IP65.

## LPAX & EPAX Series:

1.5" (LPAX) and 4" (EPAX) displays based on the popular PAX Series with all of the same features, including field-upgradeable option cards. NEMA 4X/IP65.



See our online panel meter selector

**[www.redlion.net](http://www.redlion.net)**



**Learn more at [www.redlion.net](http://www.redlion.net).**

Call +1 (717) 767-6511 to speak to a representative.

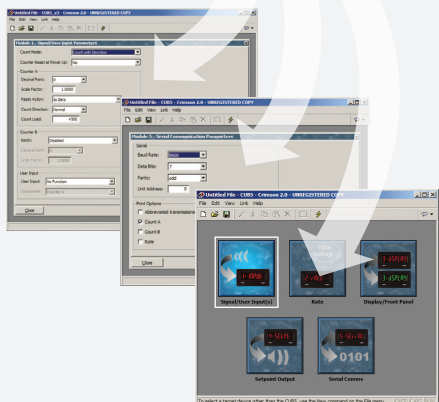
►►► **Plug-in flexibility and savings. Extendable solutions change everything.**



**Crimson® software:  
Easy-to-use, easier  
to value.**

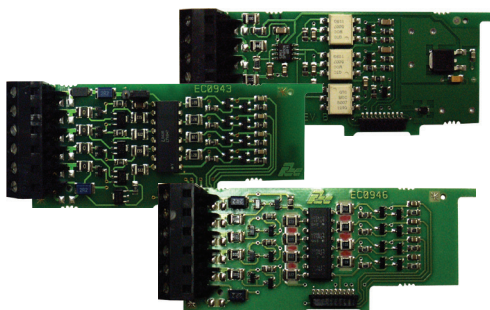
**Don't underestimate  
the value of free.**

Crimson is the only software in the industry that allows you to program panel meters, temperature controllers, HMIs, gateways, the Data Station Plus, Modular Controllers and large displays—all from the same platform. And it offers portability to let you save your configuration files to program other meters and Red Lion devices. This open, intuitive and menu-driven universal solution guides you quickly through set-up, and delivers performance and capabilities that not only rivals costly competitor software, but exceeds them. No solution is faster, easier or more flexible. At any price.

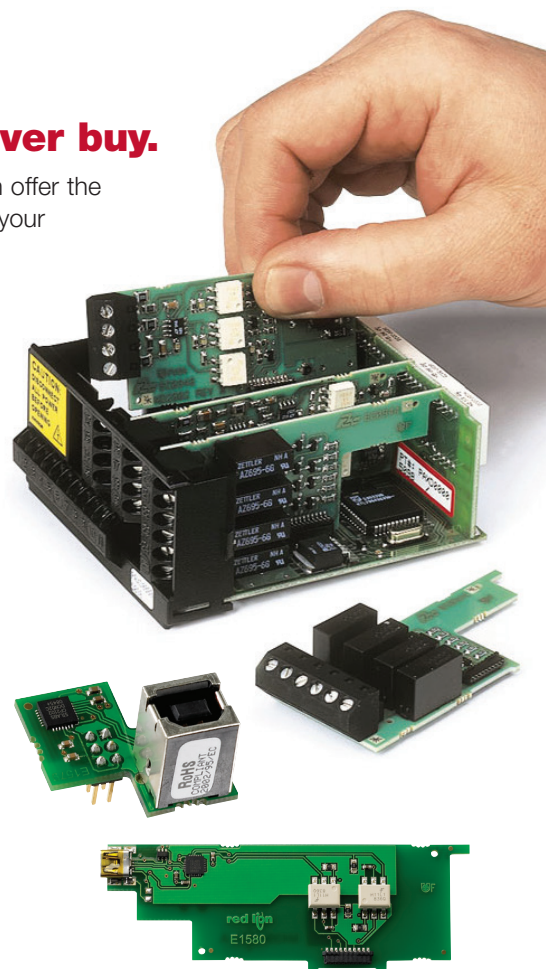


## The last meter you will ever buy.

Red Lion's CUB5 and PAX Series meters both offer the capability to add and change option cards as your application and communications requirements change. Red Lion field-upgradeable solutions are the perfect alternative to competitive meters that force you to order a new meter every time conditions change. With Red Lion meters, simply order the option card you need for easy, plug-and-play installation. With our wide range of output cards, setpoints and retransmitted analog, Red Lion can handle your challenging applications and changing requirements.



*Change functions and add capabilities with plug-and-play, field-installable cards.*



*USB cards let you quickly connect to computers and communicate directly to the meters. No more messy converters.*

## Integrate your process.

Extend the reach of Red Lion panel meters by connecting them to a G3 Series HMI, Data Station Plus or a Modular Controller. Share panel meter data with other devices by using one of the 250+ protocols and log panel meter data to an IT-ready file. Use pass-through programming to configure the panel meter remotely, then modify panel meter parameters if configuration changes are required.

When connected to a G3 HMI, Data Station Plus or Modular Controller, a panel meter can send alarm or event information via email or SMS. And you can view data remotely using a web browser for real-time monitoring and control.



*Extend your reach even further with Red Lion's industrial switches and cellular products. Complete network connectivity and communications featuring built-in redundancy coupled with robust reliability and security ensures infrastructures like yours stay up and running around the clock.*

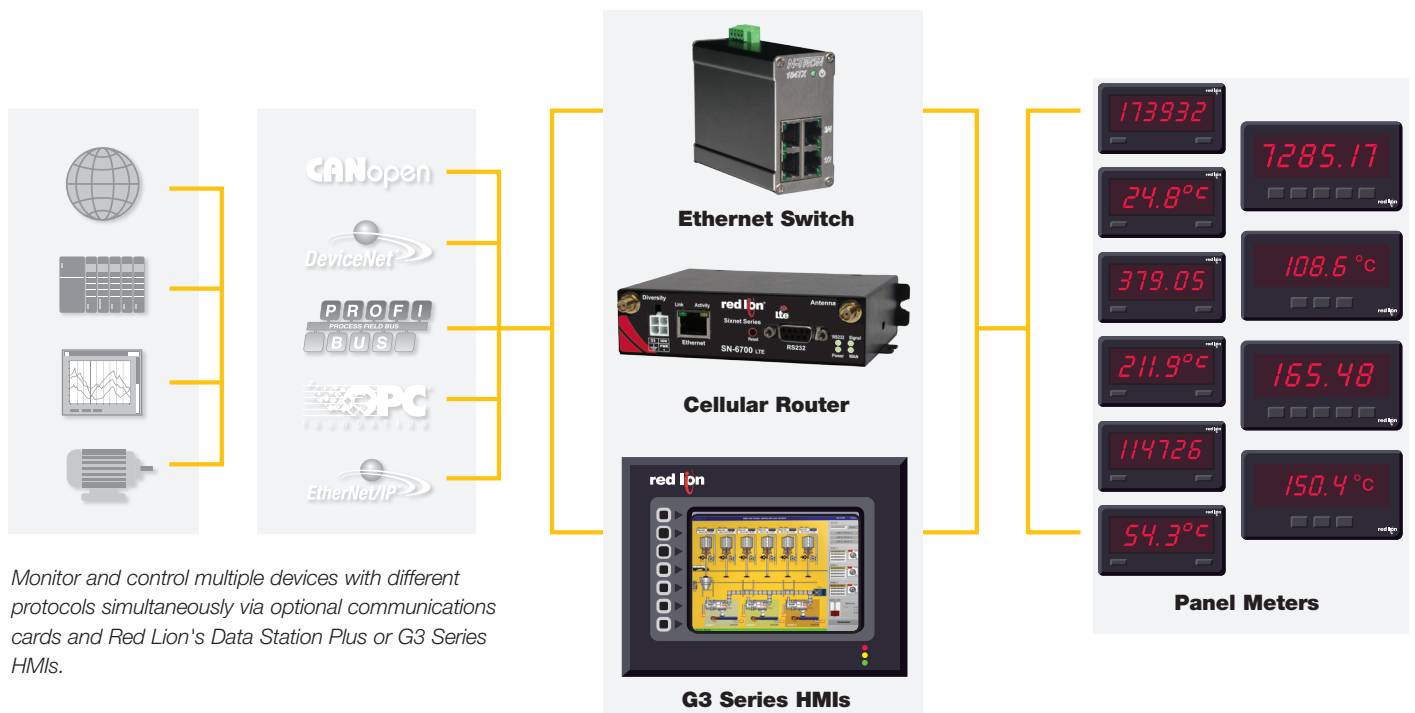
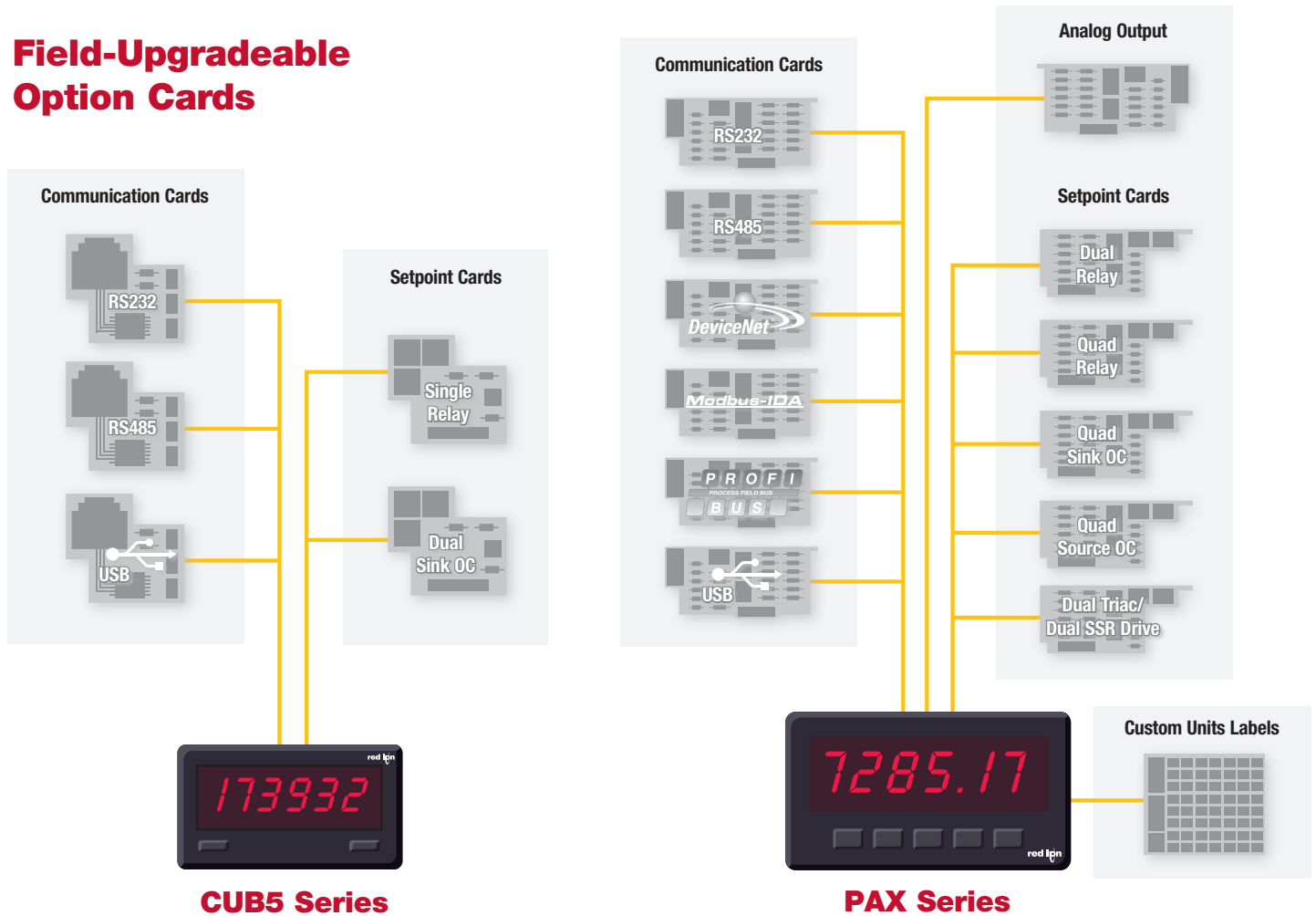


*Red Lion G3 models are available in 3" mono, plus 6", 8", 10" and 15" color touchscreens.*



## ►►► Plug-in option cards: Innovation and flexibility.

### Field-Upgradeable Option Cards



Monitor and control multiple devices with different protocols simultaneously via optional communications cards and Red Lion's Data Station Plus or G3 Series HMIs.

## ▶▶▶ Panel meter specifications

### Indication



**CUB7**  
Miniature 1/32 DIN



**PAX Lite**  
1/8 DIN Meter Series

### Control & Indication



**CUB5**  
Miniature Intelligent  
Meter Series



**C48C/C48T**  
Miniature 1/16  
DIN



**LD Series**  
Large Displays

Display Type	8-Digit, Reflective or Red and Green Backlight LCD, 0.35" (9 mm)	5- to 8-Digit Red LED Display 0.56" (14 mm)	5- or 8-Digit, Reflective or Red/Green Backlight LCD, 0.46" (12 mm)	6-Digit, Reflective or Red/Green Backlight LCD, 0.3" (7.6 mm)/0.2" (5 mm)	5- and 6-Digit, 2.25" (57 mm) or 4" (101 mm) Red LED Display
Dimension (W x H)	2" x 1.1" (51 x 28 mm)	3.80" x 1.95" (97 x 50 mm)	2.95" x 1.5" (75 x 38 mm)	1.95" x 1.95" (50 x 50 mm)	12" x 4" (304 x 101 mm) or 16" x 4" (406 x 101 mm) or 20" x 7.87" (508 x 200 mm) or 26" x 7.87" (660 x 200 mm)
Input Capability	Count and Time	Count, Rate, Time, Current, Voltage, Process, Strain Gage & Temperature	Count, Rate, Time, Current, Voltage, Process and Temperature	Count or Time	Count, Rate, Time, Current, Voltage, Process and Serial Slave
Setpoint Capability	N/A	Dual Outputs (Some Models)	Single or Dual Outputs*	Single, Dual & Triple Outputs	Single or Dual Outputs
Retransmitted Analog	N/A	N/A	N/A	N/A	N/A
Power Source	Lithium Battery, 9 to 28 VDC for Backlighting	85 to 250 VAC	9 to 28 VDC	85 to 250 VAC or 18 to 36 VDC/24 VAC	Universal Power, 50 to 250 VAC and 22 to 250 VDC
Sensor Excitation	N/A	Yes	N/A	Yes*	Yes
Other Features	Front Panel Reset or Remote Reset	Custom Units Overlay for Analog Meters	2 Option Card Slots. Front Panel Reset or Remote Reset	N/A	N/A
Communications Capability	N/A	N/A	Yes*	Yes	Yes
NEMA 4X/IP65	Front Panel	Front Panel	Front Panel	Front Panel	Sealed Case

DIGITAL Applications	CUB5	PAX Lite	C48C/C48T	PAX/PAX2	Large Displays
Counting/Totalizing	CUB5R000, CUB5B000	PAXLC600, PAXLC800	C48C Series	PAXC0020, PAX2D000	LD Series, LPAX/EPAX
Preset Count	CUB5R000, CUB5B000*	PAXLCR00	C48C Series	PAXI0020, PAX2D000*	LD Series, LPAX/EPAX
Batch Count	CUB5R000, CUB5B000*	N/A	C48C Series	PAXI0020, PAX2D000*	LD Series, LPAX/EPAX
Rate Indication	CUB5R000, CUB5B000	PAXLR000	N/A	PAXR0020, PAX2D000	LD Series, LPAX/EPAX
Rate Control	CUB5R000, CUB5B000*	PAXLCR00	N/A	PAXI0020, PAX2D000*	LD Series, LPAX/EPAX
Elapsed Timing	CUB5TR00, CUB5TB00	N/A	C48T Series	PAXTM000	LD Series, LPAX/EPAX
Time Control	CUB5TR00, CUB5TB00*	N/A	C48T Series	PAXTM000*	LD Series, LPAX/EPAX
Real-Time Clock	N/A	N/A	N/A	PAXCK000	LPAX/EPAX

\*Meter requires option card to provide capability.



See our online panel meter selector [www.redlion.net](http://www.redlion.net)



# Advanced Control & Indication



PAX 1/8 DIN Intelligent Meter Series	PAX2 Dual Line 1/8 DIN Intelligent Meter Series	LPAX/EPAX Large Displays	T48/P48 Miniature 1/16 DIN	PAX2C Dual Line 1/8 DIN Intelligent Meter Series
5- or 6-Digit Red or Green LED Display 0.56" (14 mm)	6-Digit, 0.7" (17.8mm) Top Line 9-Digit, 0.34" (8.6 mm) Bottom Red/Orange/ Green LCD Display	5- and 6-Digit, 1.5" (38 mm) or 4" (101 mm) Red LED Display	4-Digit, Dual Line Red/Green LED Display 0.4" (10.2 mm)/0.3" (7.6 mm)	Line 1 - 0.62" (15.7 mm), Line 2 - 0.47" (12 mm) - Horizontal Line 1 - 0.51" (13 mm), Line 2 - 0.44" (11.2 mm) - Vertical Red/Orange/Green LCD Display
3.80" x 1.95" (97 x 50 mm)	3.80" x 1.95" (97 x 50 mm)	10" x 4.75" (254 x 121 mm) or 24.77" x 7.2" (629 x 183 mm)	1.95" x 1.95" (50 x 50 mm)	3.80" x 1.95" (97 x 50 mm) - Horizontal 1.95" x 3.80" (50 x 97 mm) - Vertical
Count, Rate, Time, Current, Voltage, Process, Strain Gage and Temperature	Current, Voltage, Process, Resistance, and Temperature	Count, Rate, Time, Current, Voltage, Process, Strain Gage and Temperature (INRT Module Sold Separately)	Full PID Control for Temperature or Process	Full PID Control for Process and Temperature
Dual or Quad Outputs*	Dual or Quad Outputs*	Dual or Quad Outputs*	Single, Dual & Triple Outputs	Dual or Quad Outputs*
Yes*	Yes*	Yes*	Yes	Yes*
85 to 250 VAC or 11 to 36 VDC	Universal Power, 50 to 250 VAC and 22 to 250 VDC	85 to 250 VAC or 11 to 36 VDC	85 to 250 VAC or 18 to 36 VDC/24 VAC	Universal Power, 50 to 250 VAC and 22 to 250 VDC
Yes	Yes	Yes	N/A	Yes
Custom Units Overlay for Analog Meters, 3 Option Card Slots	Custom Programmable Mnemonics, 3 Option Card Slots,	USB Programming Card, 3 Option Card Slots	N/A	Custom Programmable Mnemonics 3 Option Card Slots
Yes*	Yes*	Yes*	Yes	Yes*
Front Panel	Front Panel	Front Panel	Front Panel	Front Panel

ANALOG Applications	CUB5	PAX Lite	T48/P48	PAX/PAX2	Large Displays
AC Current	N/A	PAXLIA00, PAXLIT00	N/A	PAXH0000	LPAX/EPAX
AC Voltage	N/A	PAXLVA00, PAXLHV00	N/A	PAXH0000	LPAX/EPAX
DC Current	CUB5IR00, CUB5IB00	PAXLID00, PAXLA000	N/A	PAXD0000 PAX2A000,	LD Series, LPAX/EPAX
DC Voltage	CUB5VR00, CUB5VB00	PAXLVD00, PAXLA000	N/A	PAXD0000, PAX2A000	LD Series, LPAX/EPAX
Process Signals	CUB5PR00, CUB5PB00	PAXLCL00, PAXLA000	N/A	PAXP0000, PAX2A000	LD Series, LPAX/EPAX
Temperature, RTD/Thermocouple	CUB5RTR0, CUB5RTB0 CUB5TCR0, CUB5TCB0	PAXLRT00, PAXLT000	N/A	PAXT0000, PAX2A000	LPAX/EPAX
Strain Gage/Load Cells	N/A	PAXLSG00	N/A	PAXS0000	LPAX/EPAX
PID Controller	N/A	N/A	T48/P48 Series	PX2A8H00, PX2A8V00	N/A

▶▶▶ A comprehensive portfolio of industrial automation and networking solutions to **connect. monitor. control.**



## INDUSTRIAL AUTOMATION

### Process Control

- ▶ PID Controllers
- ▶ Data Acquisition
- ▶ RTUs & I/O Modules
- ▶ Signal Conditioners
- ▶ Sensors

### HMIs & Panel Meters

- ▶ HMI Operator Panels
- ▶ Panel Meters
- ▶ Large LED Displays
- ▶ Industrial TV Displays

## INDUSTRIAL NETWORKING

### Ethernet Switches

- ▶ Unmanaged
- ▶ Monitored
- ▶ Managed
- ▶ PoE
- ▶ Routers
- ▶ Wi-Fi Radios

### Cellular M2M

- ▶ Cellular Routers
- ▶ Cellular RTUs

### Communication Converters

- ▶ Protocol Converters
- ▶ Media Converters
- ▶ Serial Converters



[www.redlion.net](http://www.redlion.net)

**Connect. Monitor. Control.**

### Americas

[sales@redlion.net](mailto:sales@redlion.net)

### Asia-Pacific

[asia@redlion.net](mailto:asia@redlion.net)

### Europe

### Middle East

### Africa

[europa@redlion.net](mailto:europa@redlion.net)

**+1 (717) 767-6511**

As the global experts in communication, monitoring and control for industrial automation and networking, Red Lion has been delivering innovative solutions for over forty years. Our award-winning technology enables companies worldwide to gain real-time data visibility that drives productivity. Product brands include Red Lion, N-Tron and Sixnet. With headquarters in York, Pennsylvania, the company has offices across the Americas, Asia-Pacific and Europe. For more information, please visit [www.redlion.net](http://www.redlion.net). Red Lion is a Spectris company.